

# TEORÍA MUSICAL

Curso 6º

Escuela Municipal de Música

“Gratiniano Martínez”



[www.antoniodomingo.es](http://www.antoniodomingo.es)

...el arte de enseñar con música

# Los Modos Eclesiásticos N° 1

Tembleque  
Diciembre de 2004

Edición: The sun ant

antoniomingo.es

## Primer Modo: PROTUS

Musical notation for the first mode (Protus) on a treble clef staff. The scale is represented by seven whole notes on a single line. The intervals between the notes are indicated by curved lines and labels below the staff: 1 tono, 1/2 tono, 1 tono, 1 tono, 1 tono, 1/2 tono, and 1 tono.

## Sol Protus

An empty musical staff with a treble clef, intended for the Sol Protus mode.

## Mi Protus

An empty musical staff with a treble clef, intended for the Mi Protus mode.

## Fa Protus

An empty musical staff with a treble clef, intended for the Fa Protus mode.

## La Protus

An empty musical staff with a treble clef, intended for the La Protus mode.

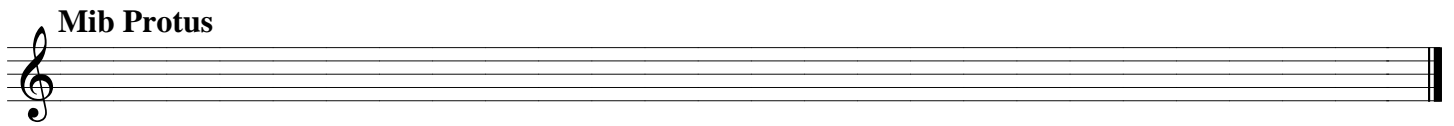
## Lab Protus

An empty musical staff with a treble clef, intended for the Lab Protus mode.

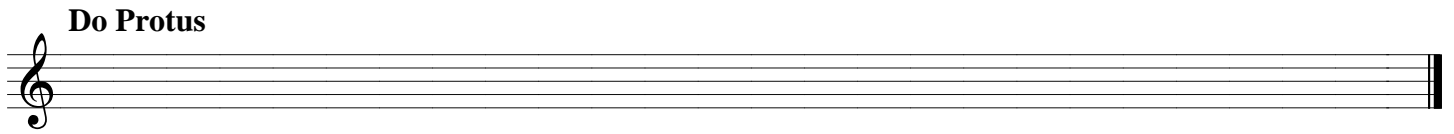
## Sib Protus

An empty musical staff with a treble clef, intended for the Sib Protus mode.

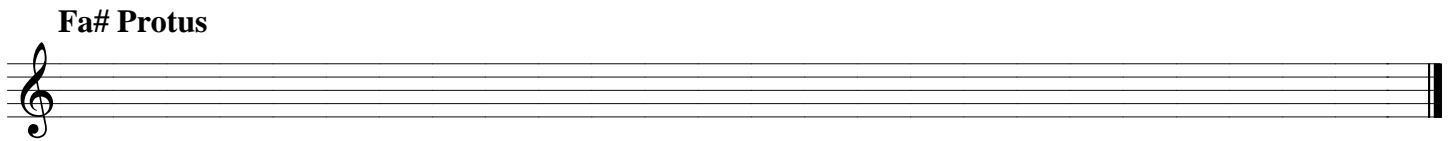
**Mib Protus**

A musical staff with a treble clef and a blank staff line.

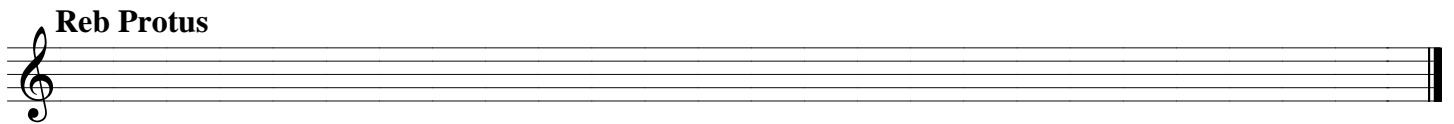
**Do Protus**

A musical staff with a treble clef and a blank staff line.

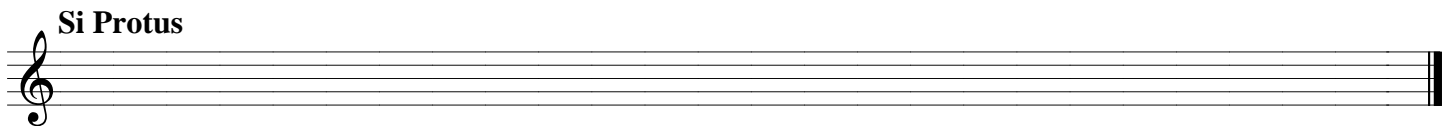
**Fa# Protus**

A musical staff with a treble clef and a blank staff line.

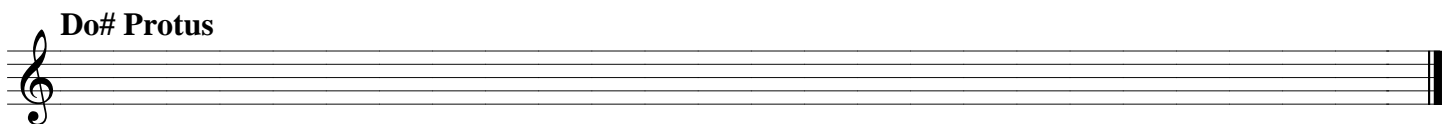
**Reb Protus**

A musical staff with a treble clef and a blank staff line.

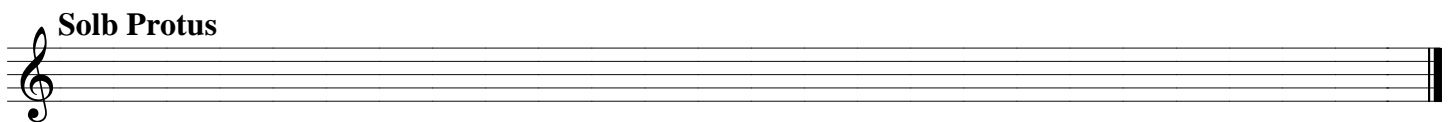
**Si Protus**

A musical staff with a treble clef and a blank staff line.

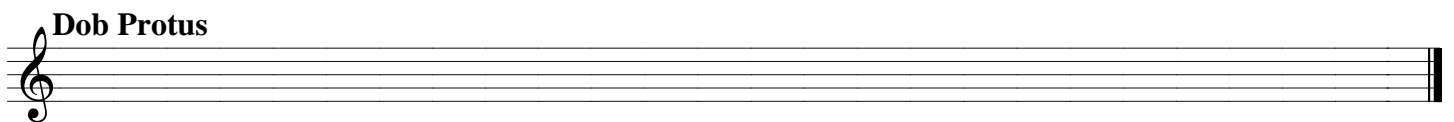
**Do# Protus**

A musical staff with a treble clef and a blank staff line.

**Solb Protus**

A musical staff with a treble clef and a blank staff line.

**Dob Protus**

A musical staff with a treble clef and a blank staff line.

# Trabajos sobre "Los 4 Tipos de Escala"

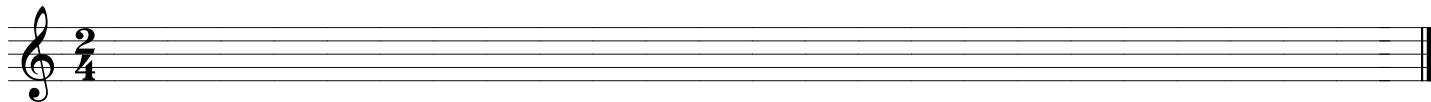
## Nº 3

Tembleque

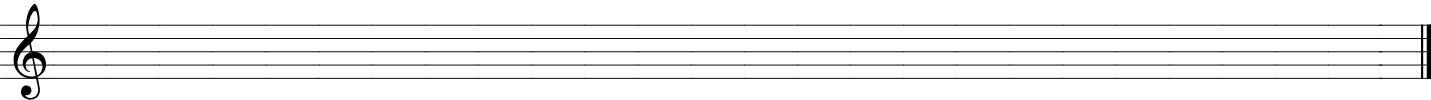
Edición: The sun ant

antoniomingo.es

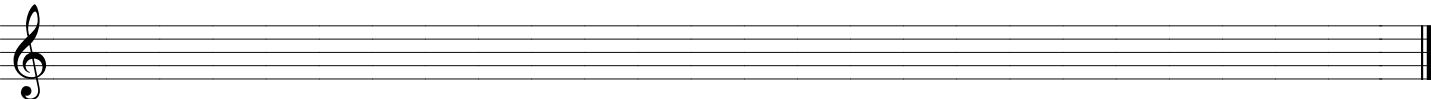
1er Tipo de Dob Mayor



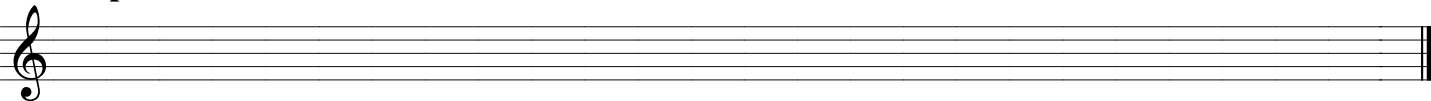
4º Tipo de Fa# Mayor



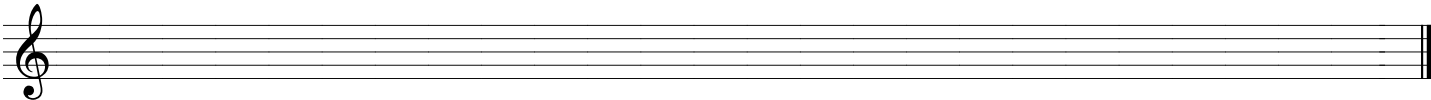
3er Tipo de Sol Menor



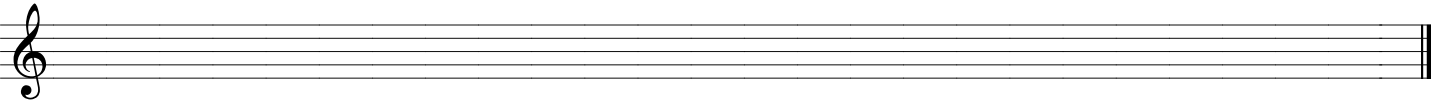
1er Tipo de la Menor



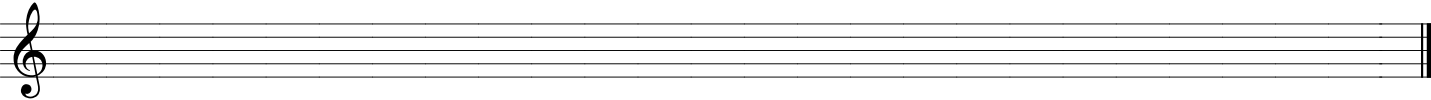
2º Tipo de Do# Mayor



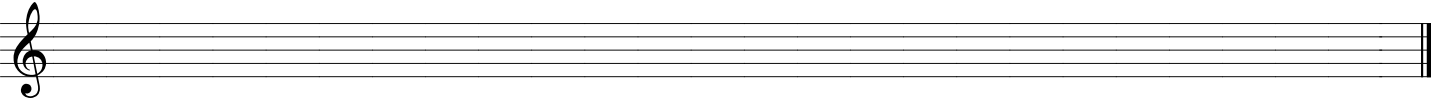
3er Tipo de Si Mayor



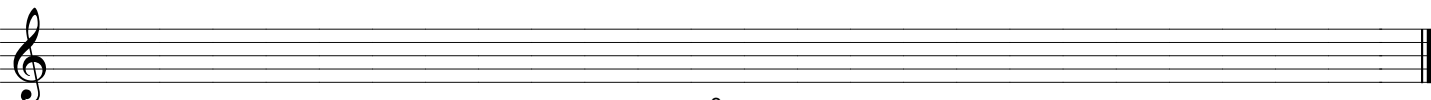
1er Tipo de Re Menor



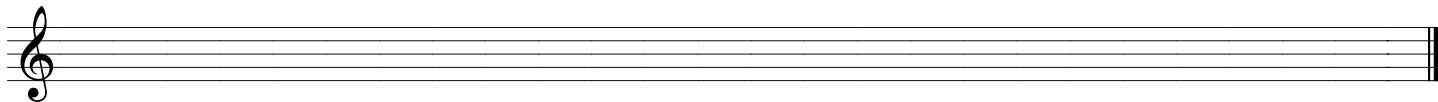
4º Tipo de Mib Menor



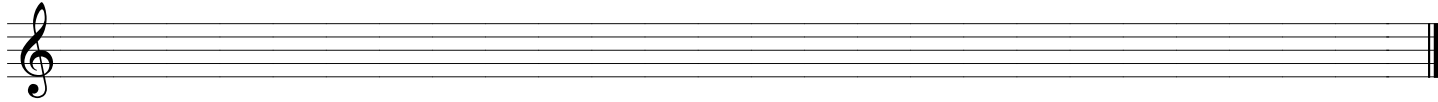
2º Tipo de Reb Mayor



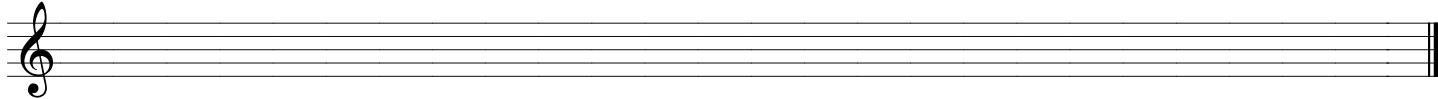
**3er Tipo de Sib Menor**



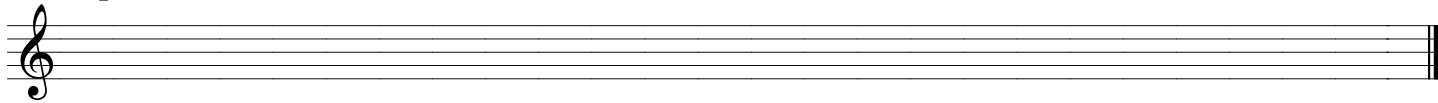
**1er Tipo de Fa# Mayor**



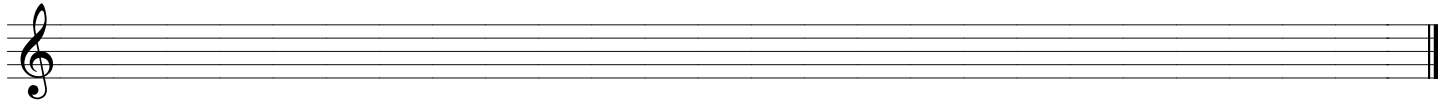
**2º Tipo de Dob Mayor**



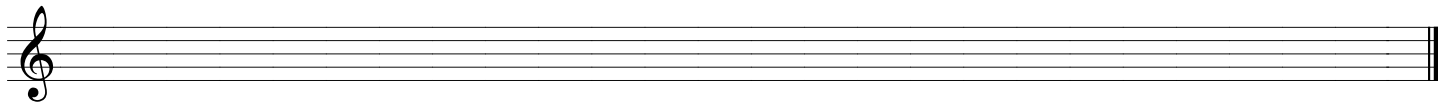
**4º Tipo de Si Menor**



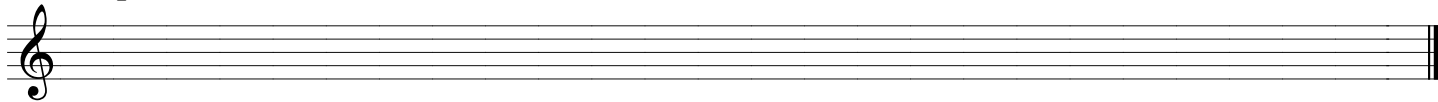
**3er Tipo de Re Mayor**



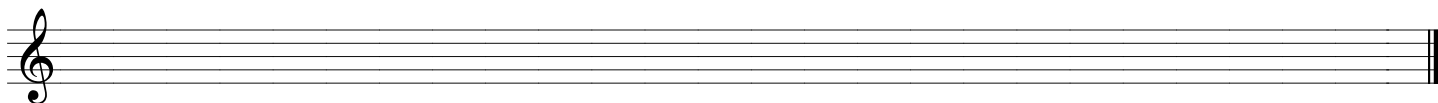
**2º Tipo de Fa Mayor**



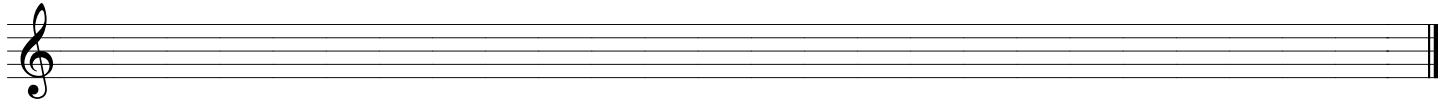
**1er Tipo de Lab Menor**



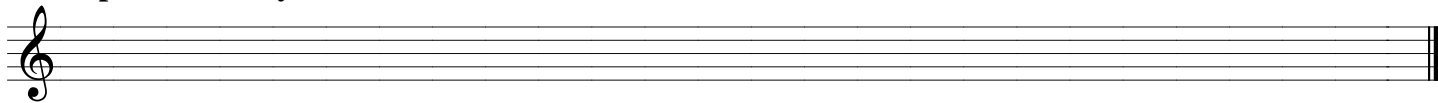
**4º Tipo de Do# Menor**



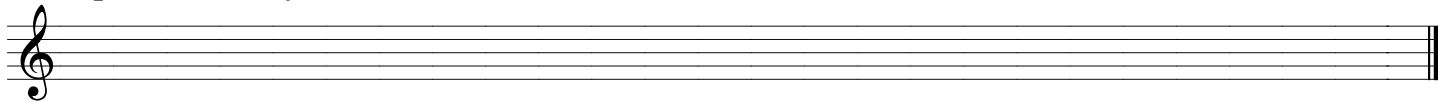
**2º Tipo de Sib Mayor**



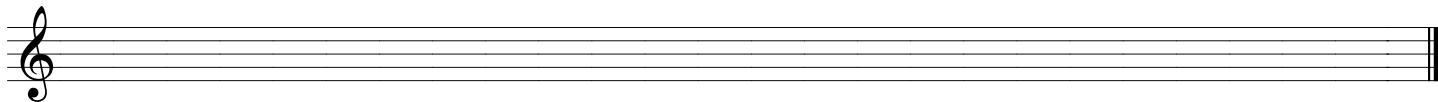
**2º Tipo de Sol Mayor**



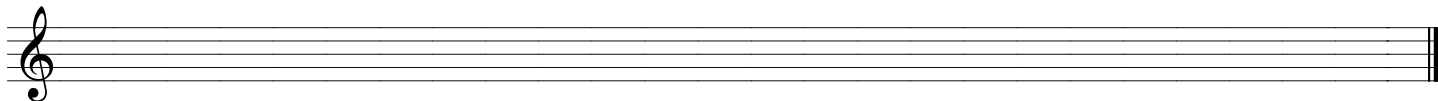
**4º Tipo de Lab Mayor**



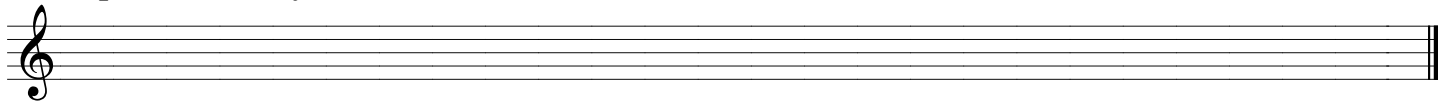
**2º Tipo de Do Menor**



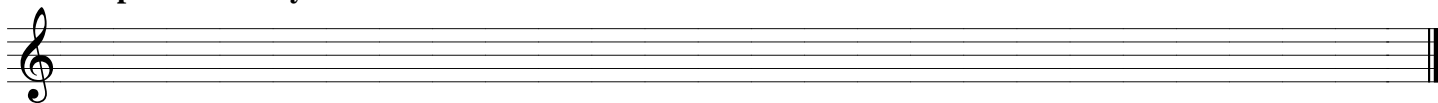
**3er Tipo de Fa Menor**



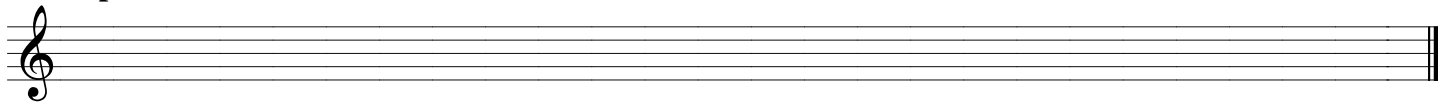
**4º Tipo de Mib Mayor**



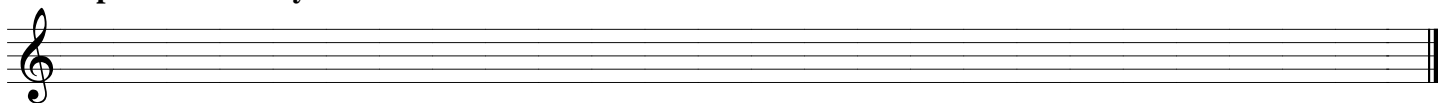
**1er Tipo de La Mayor**



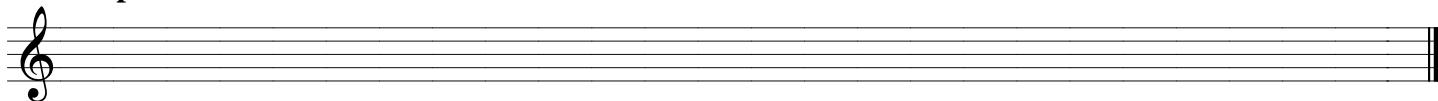
**2º Tipo de Mi Menor**



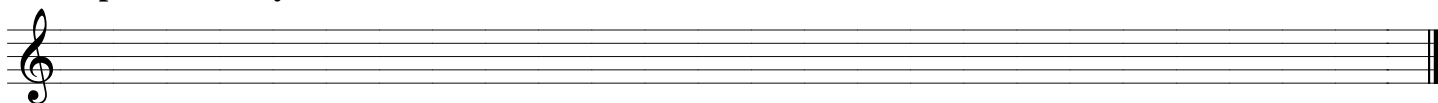
**4º Tipo de Solb Mayor**



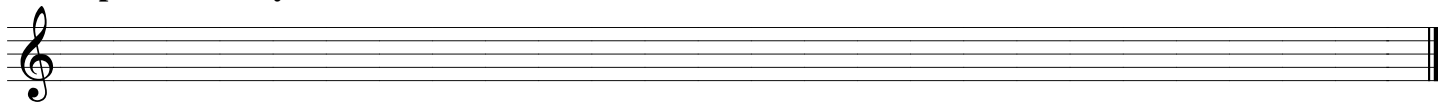
**3er Tipo de Fa# Menor**



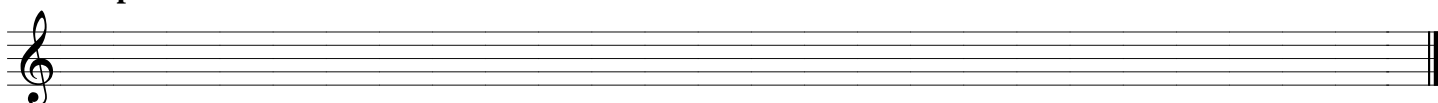
**4º Tipo de Mi Mayor**



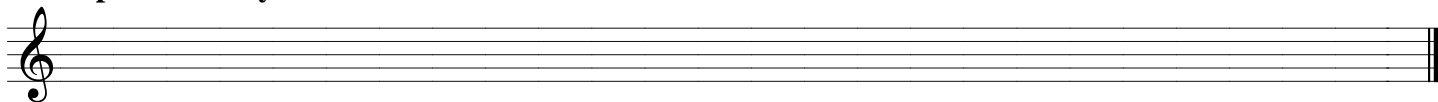
**2º Tipo de Do Mayor**



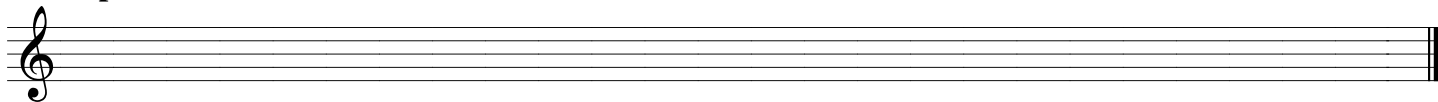
**1er Tipo de Fa Menor**



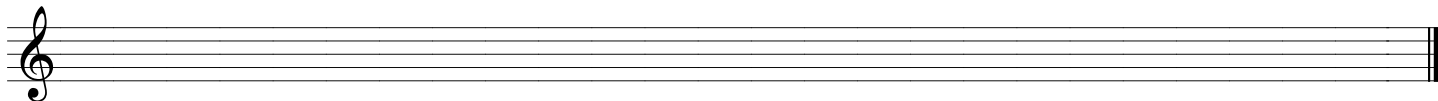
**4º Tipo de Si Mayor**



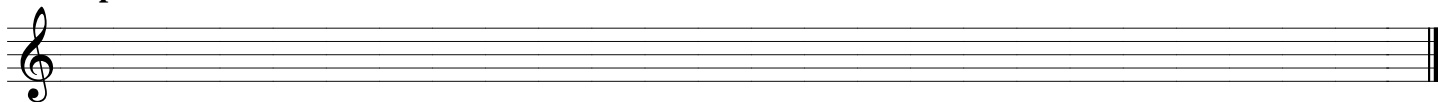
**2º Tipo de Re Menor**



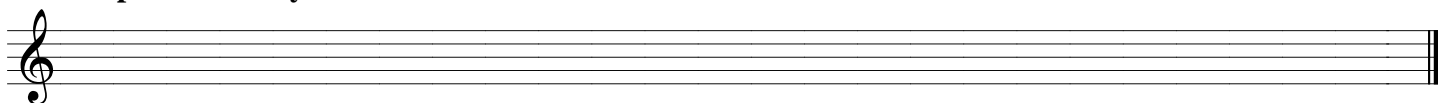
**3er Tipo de Sol Mayor**



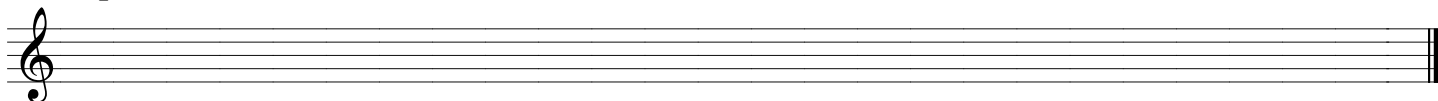
**2º Tipo de Do# Menor**



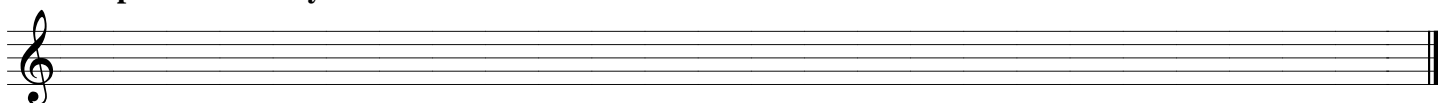
**3er Tipo de La Mayor**



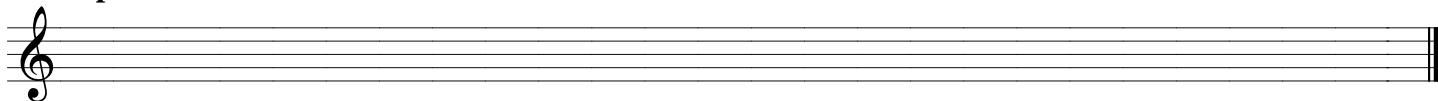
**4º Tipo de Sol Menor**



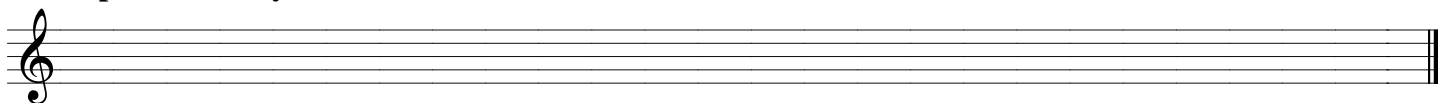
**1er Tipo de Reb Mayor**



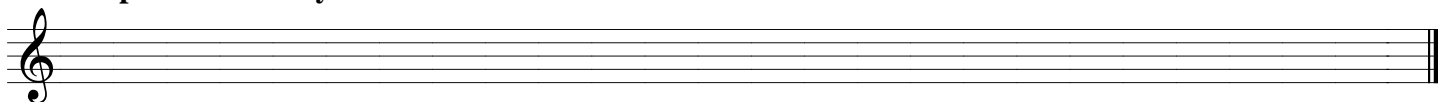
**4º Tipo de Do Menor**



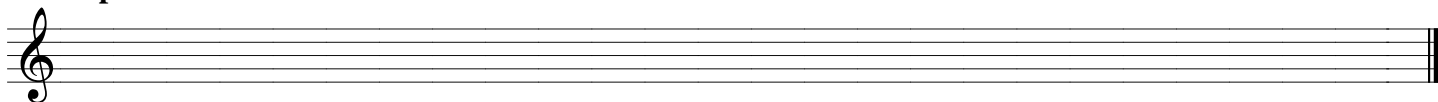
**2º Tipo de Re Mayor**



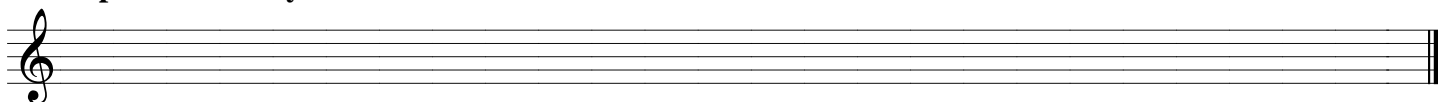
**3er Tipo de Solb Mayor**



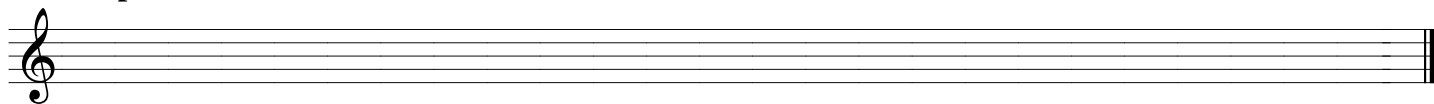
**4º Tipo de Lab Menor**



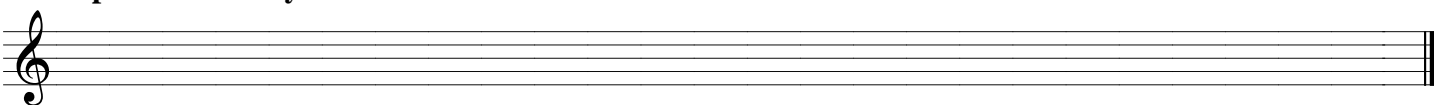
**2º Tipo de Fa# Mayor**



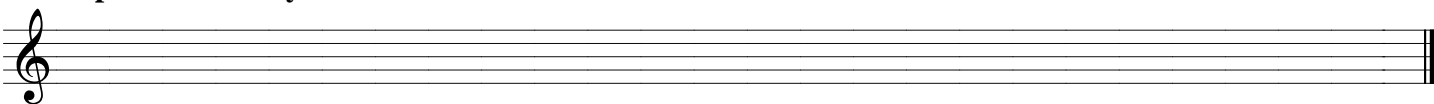
**1er Tipo de Mi Menor**



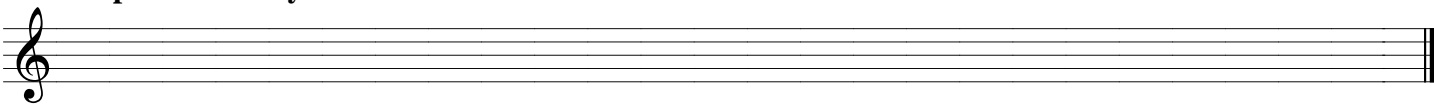
**4º Tipo de Dob Mayor**



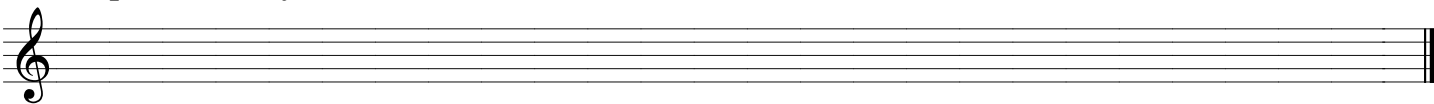
**2º Tipo de Lab Mayor**



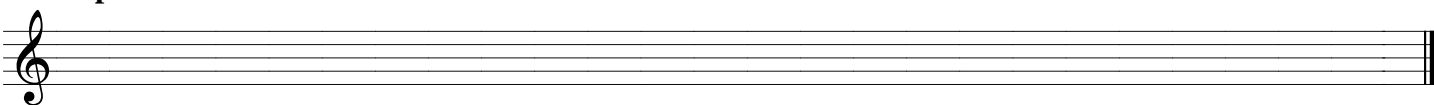
**3er Tipo de Mi Mayor**



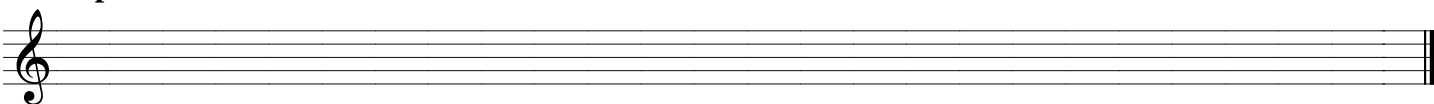
**1er Tipo de Fa Mayor**



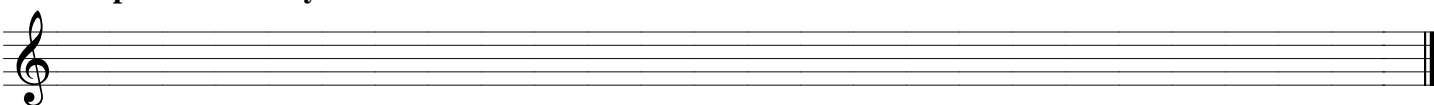
**2º Tipo de Si Menor**



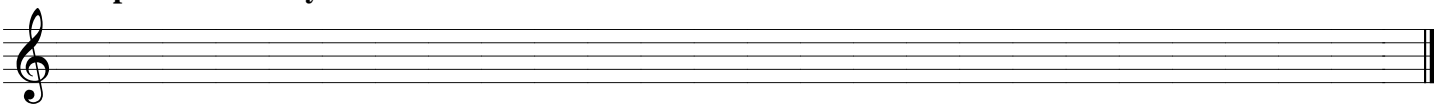
**4º Tipo de La Menor**



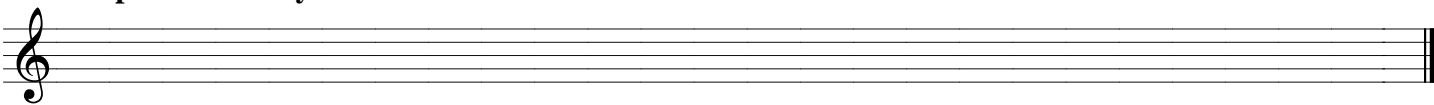
**3er Tipo de Do# Mayor**



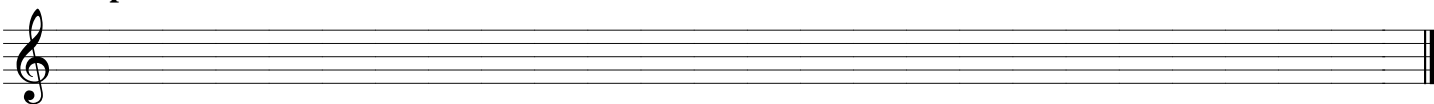
**1er Tipo de Mib Mayor**



**3er Tipo de Sib Mayor**



**1er Tipo de Fa# Menor**





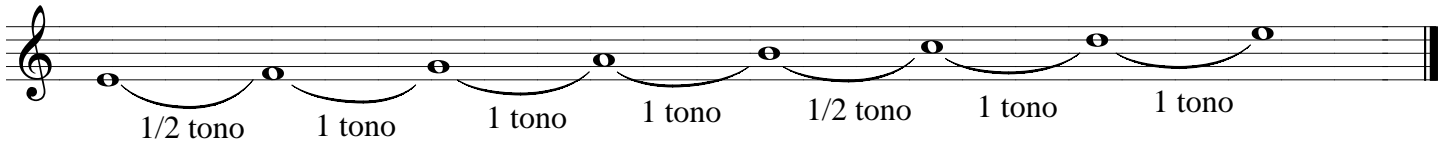
# Los Modos Eclesiásticos N° 2

Tembleque  
Enero de 2005

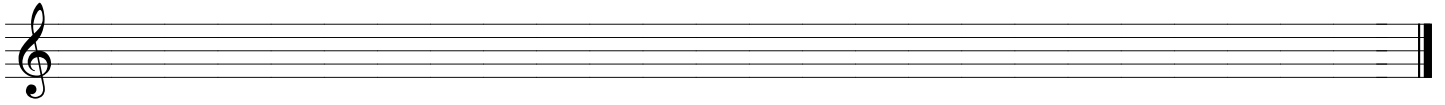
Edición: The sun ant

antoniomingo.es

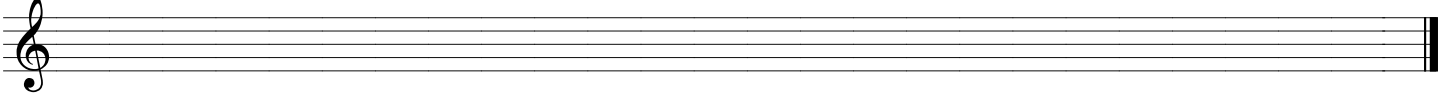
## Segundo Modo: DEUTERUS



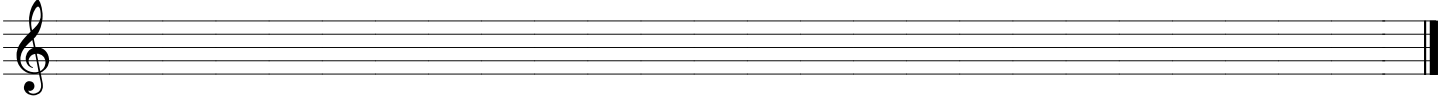
### La Deuterus



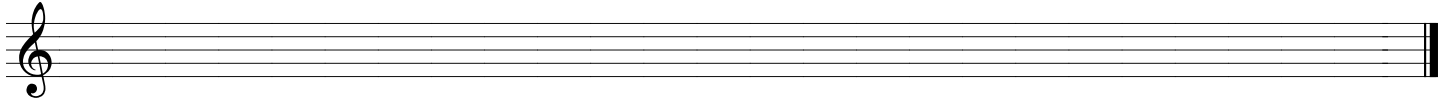
### Mib Deuterus



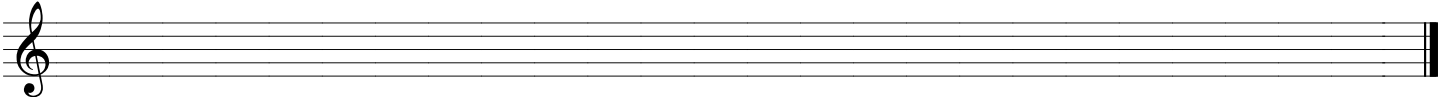
### Do Deuterus



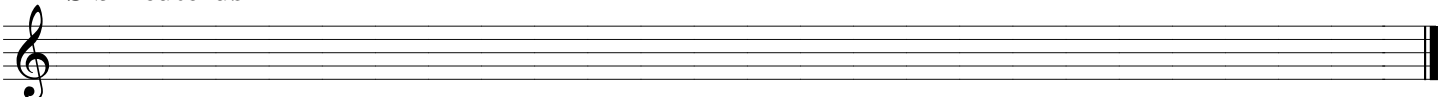
### Fa Deuterus



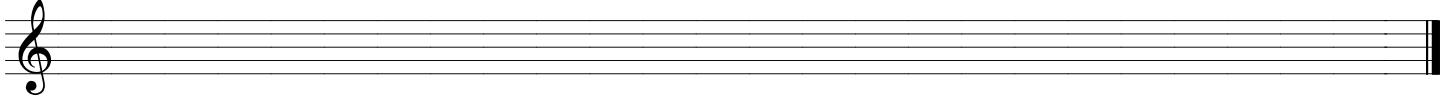
### Reb Deuterus



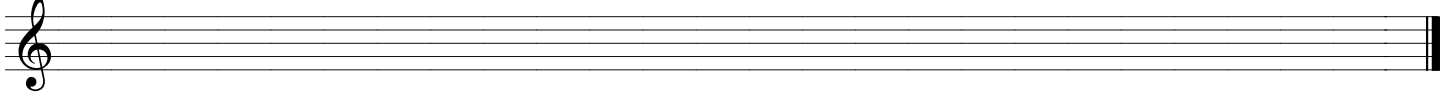
### Sib Deuterus



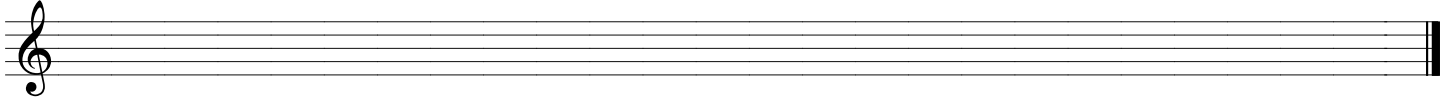
**Mi Deuterus**



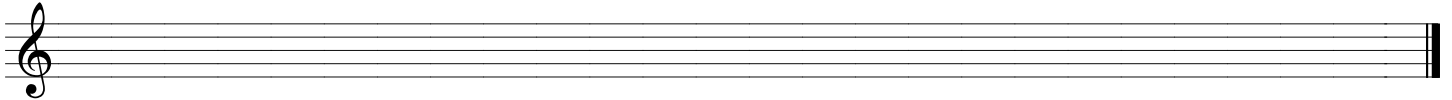
**Do# Deuterus**



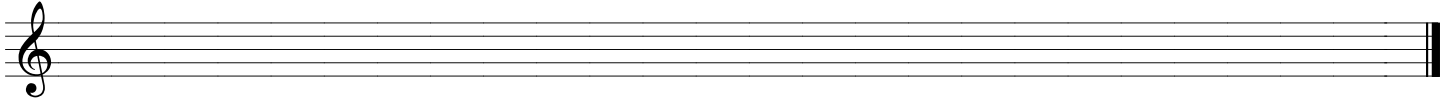
**Lab Deuterus**



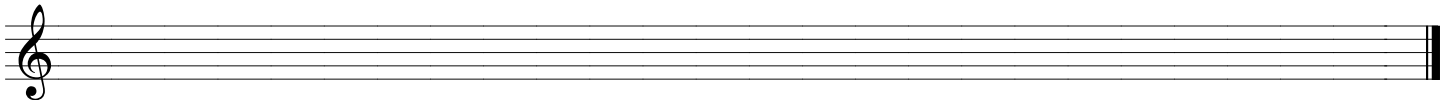
**Re Deuterus**



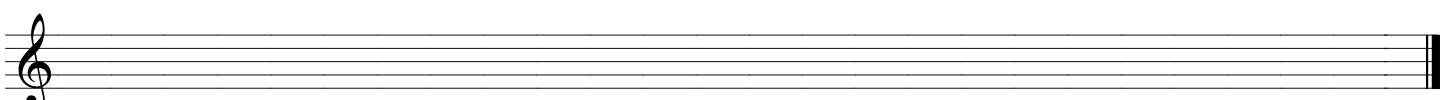
**Si Deuterus**



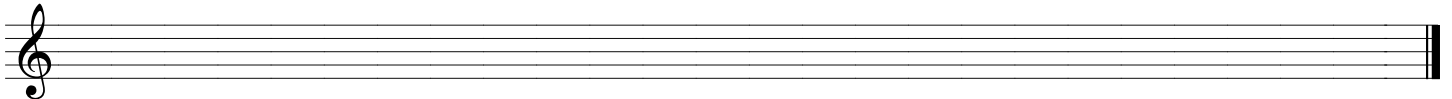
**Fa# Deuterus**



**Sol Deuterus**



**Dob Deuterus**



# Trabajos sobre Tonalidades

## Nº 6

Tembleque  
Enero de 2000

Edición: The sun ant

antoniomingo.es

<i>Nº de Alteraciones</i>	<i>0</i>						<i>3#</i>	
<i>TONO MAYOR</i>		<i>Fa M</i>			<i>Sol M</i>			
<i>(en cifrado americano)</i>				<i>Eb</i>				<i>Bb</i>
<i>RELATIVO MENOR</i>			<i>Si m</i>					
<i>(en cifrado americano)</i>						<i>G#-</i>		

<i>Nº de Alteraciones</i>	<i>6b</i>			<i>7#</i>				
<i>TONO MAYOR</i>					<i>Fa# M</i>			
<i>(en cifrado americano)</i>		<i>Ab</i>					<i>Db</i>	
<i>RELATIVO MENOR</i>						<i>Lab m</i>		
<i>(en cifrado americano)</i>			<i>C#-</i>					<i>E#-</i>

# Los Modos Eclesiásticos N° 3

Tembleque  
Septiembre de 2009

Edición: The sun ant

antoniomingo.es

## Tercer Modo: TRITUS

1 tono 1 tono 1 tono 1/2 tono 1 tono 1 tono 1/2 tono

## Mi Tritus

## Do Tritus

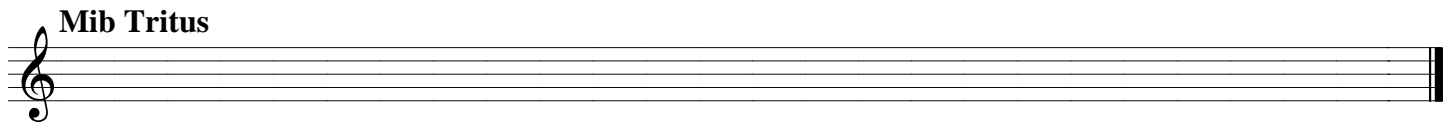
## Re# Tritus

## Fa# Tritus

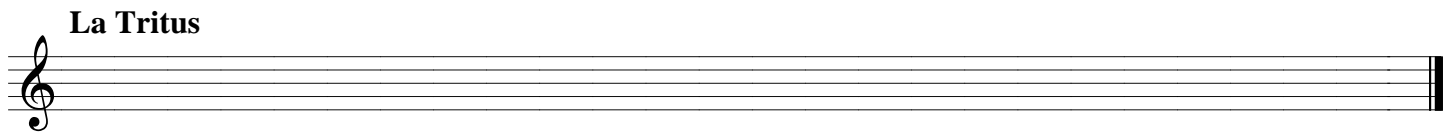
## Lab Tritus

## Sol Tritus

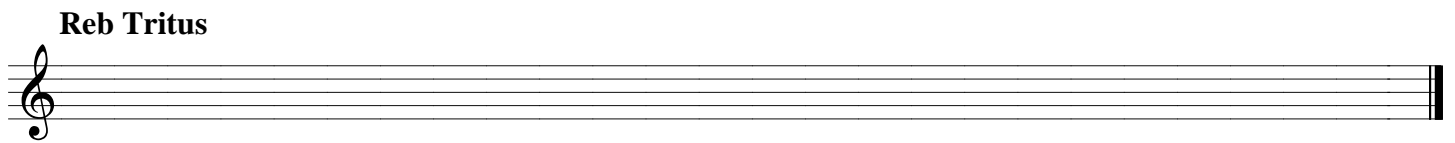
**Mib Tritus**

A single musical staff with a treble clef and a double bar line at the end.

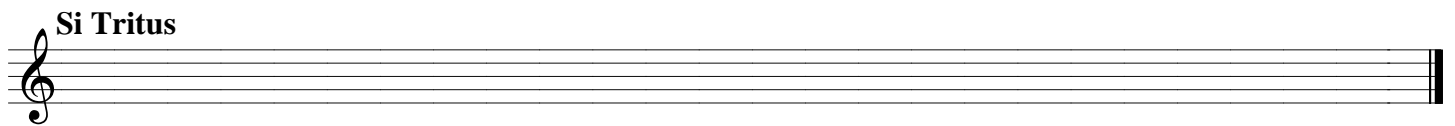
**La Tritus**

A single musical staff with a treble clef and a double bar line at the end.

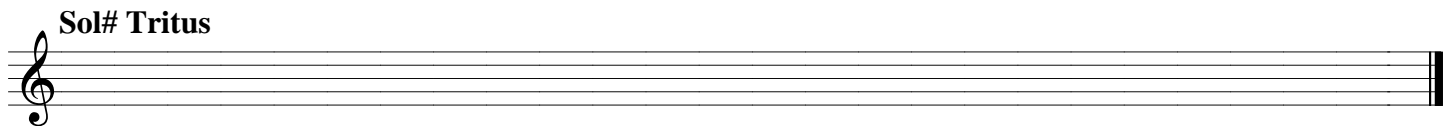
**Reb Tritus**

A single musical staff with a treble clef and a double bar line at the end.

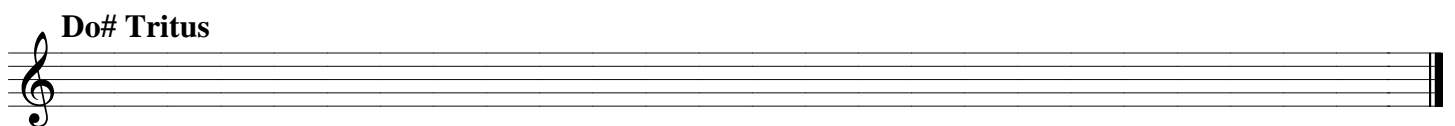
**Si Tritus**

A single musical staff with a treble clef and a double bar line at the end.

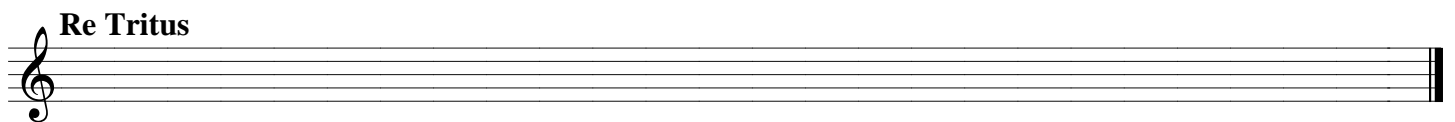
**Sol# Tritus**

A single musical staff with a treble clef and a double bar line at the end.

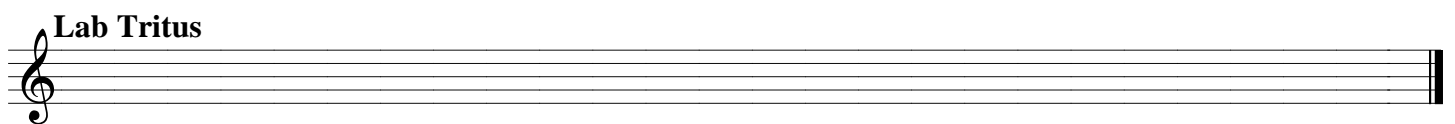
**Do# Tritus**

A single musical staff with a treble clef and a double bar line at the end.

**Re Tritus**

A single musical staff with a treble clef and a double bar line at the end.

**Lab Tritus**

A single musical staff with a treble clef and a double bar line at the end.

# Los Modos Eclesiásticos N° 4

Tembleque  
Enero de 2005

Edición: The sun ant

antoniomingo.es

## Cuarto Modo: TETRARDUS

1 tono    1 tono    1/2 tono    1 tono    1 tono    1/2 tono    1 tono

## Fa Tetrardus

## Do# Tetrardus

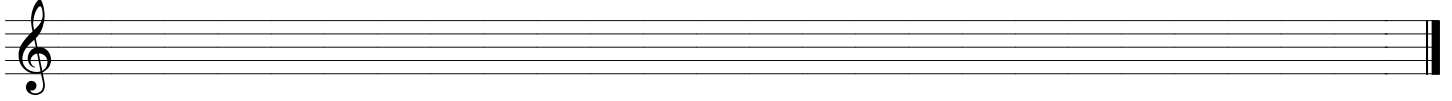
## La Tetrardus

## Re Tetrardus

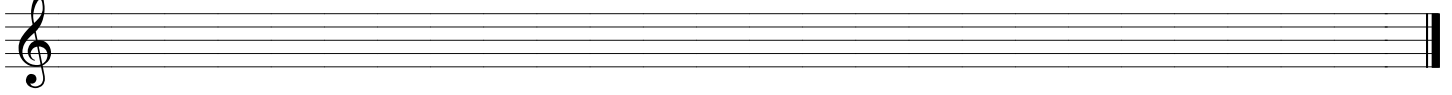
## Sib Tetrardus

## Solb Tetrardus

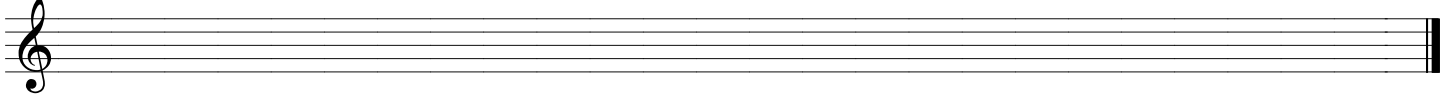
**Do Tetrardus**



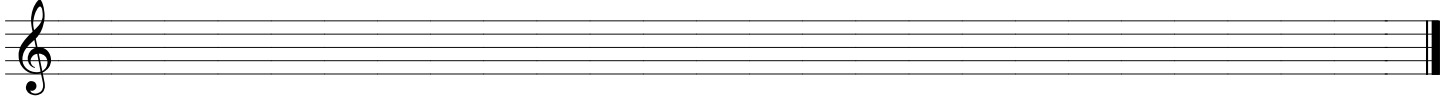
**La# Tetrardus**



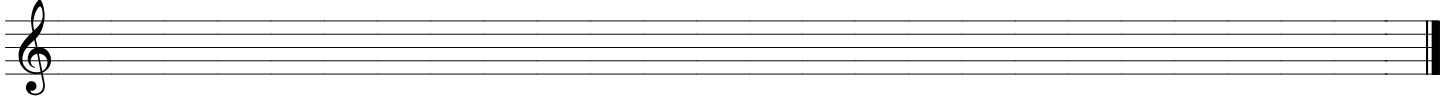
**Reb Tetrardus**



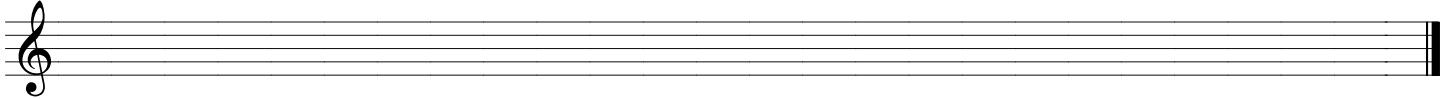
**Mi Tetrardus**



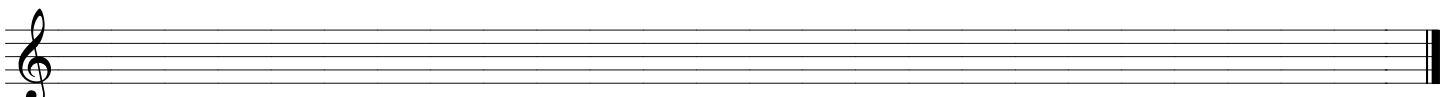
**Si Tetrardus**



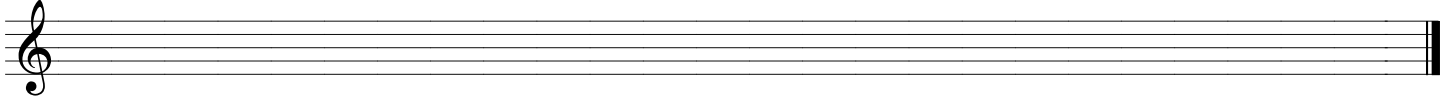
**Fa# Tetrardus**



**Sol# Tetrardus**



**Dob Tetrardus**



# Examen de Intervalos N° 2

Tembleque  
Enero de 2005

Edición: The sun ant

antoniiodomingo.es

Intervalo	Disminuido	Menor	Justo	Mayor	Aumentado
2 <sup>a</sup>					
3 <sup>a</sup>					
4 <sup>a</sup>					
5 <sup>a</sup>					
6 <sup>a</sup>					
7 <sup>a</sup>					
8 <sup>a</sup>					



# Examen de Acordes

Tembleque  
Enero de 2005

Edición: The sun ant

antoniomingo.es

En este trabajo se te dan o la quinta o la tercera o el nombre del acorde y en algunos casos el tipo: mayor, menor, aumentado o disminuido. Tú has de encontrar lo que falta.

Acorde	Notas que lo forman	Acorde	Notas que lo forman
<b>Si Mayor</b>			Mib Solb Sibb Mib
	Si Re Fa Si	<b>Sol Menor</b>	
<b>Menor</b>	___ La# ___ ___	<b>Rebb Mayor</b>	
<b>Aum.</b>	___ ___ Do ___	<b>Mayor</b>	___ Si# ___ ___
<b>Si Menor</b>		<b>Aum.</b>	___ ___ La ___
<b>Mayor</b>	___ Sib ___ ___	<b>Dism.</b>	___ ___ Sol ___
<b>Sol# Dism.</b>			Re# Fa# La# Re#
	Do Mi Sol# Do	<b>Si Aum.</b>	
<b>Dism.</b>	___ Dob ___ ___	<b>Menor</b>	___ Dob ___ ___
	Fa# La# Do Fa#	<b>Dism.</b>	___ Do# ___ ___
<b>Menor</b>	___ ___ Sib ___	<b>Mayor</b>	___ ___ Si ___
<b>Aum.</b>	___ Si# ___ ___	<b>Aum.</b>	La# DoX MiX La#

# Examen de Tonalidades

Tembleque  
Septiembre de 2004

Edición: The sun ant

antionidomingo.es

<i>Nº de Alteraciones</i>	<b>4b</b>				<b>5#</b>		<b>3#</b>	
<b>TONO MAYOR</b>		<i>Re M</i>						<i>Fa M</i>
<i>(en cifrado americano)</i>				<i>Eb</i>		<i>Gb</i>		
<b>RELATIVO MENOR</b>							<i>Mi m</i>	
<i>(en cifrado americano)</i>			<i>D#-</i>					

<i>Nº de Alteraciones</i>	<b>2b</b>				<b>4#</b>			
<b>TONO MAYOR</b>				<i>Reb M</i>				
<i>(en cifrado americano)</i>		<i>A</i>				<i>Cb</i>		
<b>RELATIVO MENOR</b>			<i>La m</i>					
<i>(en cifrado americano)</i>							<i>B#-</i>	<i>Gb-</i>

# Examen de Grados Tonales

Tembleque  
Diciembre de 2004

Edición: The sun ant

antioniodomingo.es

<u><b>TONO</b></u>	<b>m</b>	<b>M</b>	<b>m</b>	<b>M</b>	<b>m</b>	<b>m</b>	<b>M</b>	<b>M</b>	<b>m</b>	<b>m</b>	<b>M</b>
<b>SENSIBLE</b>	<b>Do#</b>										<b>Dob</b>
<b>SUBDOMINANTE</b>		<b>Do</b>									
<b>TÓNICA</b>			<b>Fa#</b>								
<b>DOMINANTE</b>				<b>Mi</b>							
<b>SUBTÓNICA</b>					<b>Sib</b>				<b>Fa#</b>		
<b>MEDIANTE</b>						<b>Do</b>					
<b>SUPERDOMINANTE</b>							<b>Mib</b>			<b>Fa</b>	
<b>SUPERTÓNICA</b>								<b>Mi</b>			
<b>Nº de ALTERACIONES</b>											

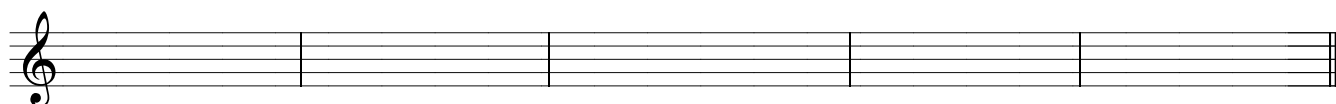
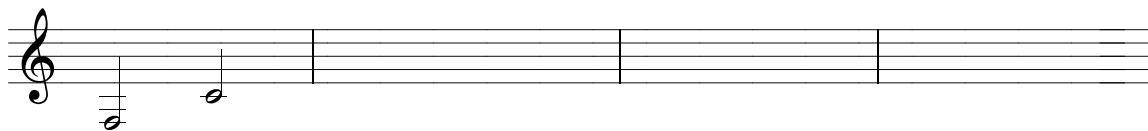
# Examen: Intervalos Enarmónicos

Tembleque  
Diciembre de 2004

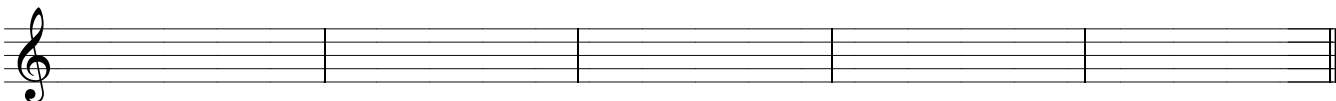
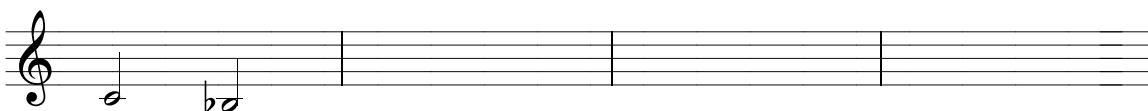
Edición: The sun ant

antoniomingo.es

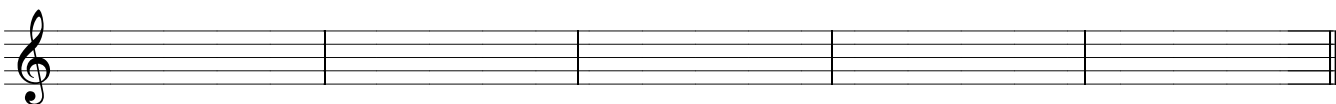
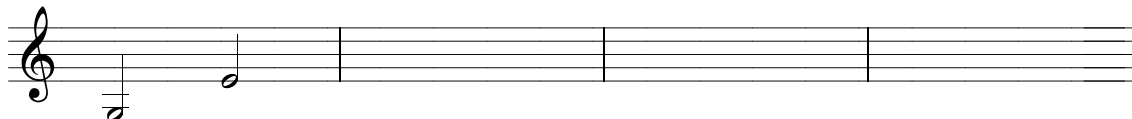
1



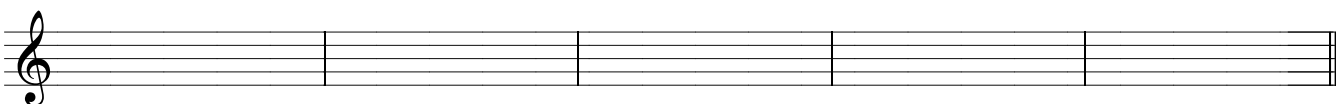
2



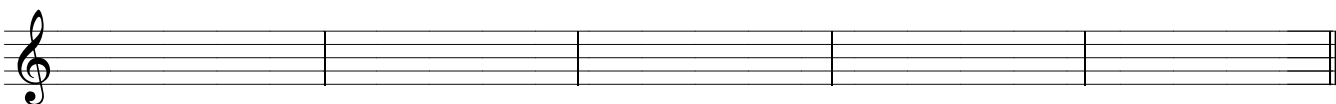
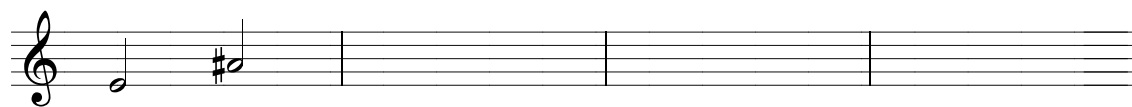
3



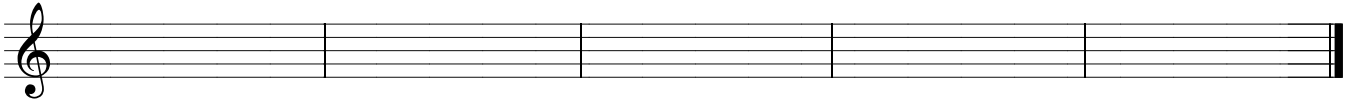
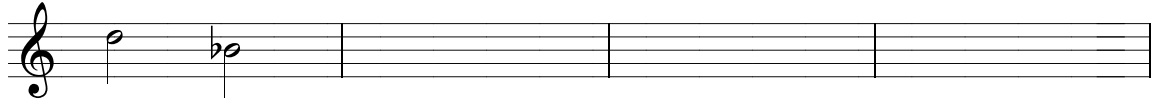
4



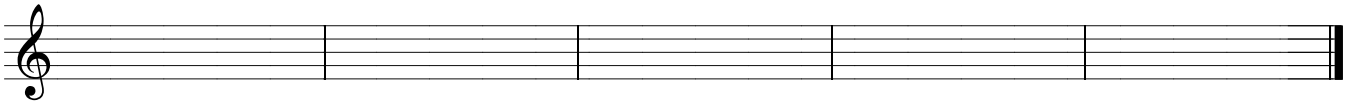
5



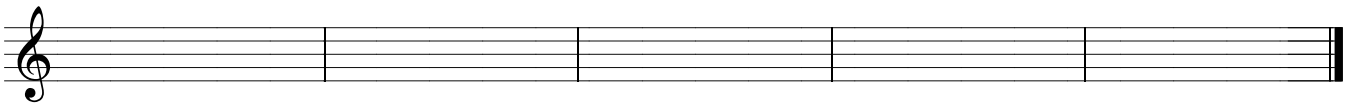
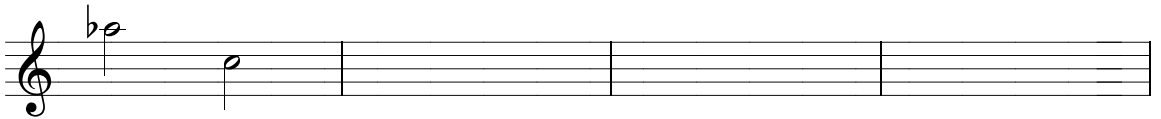
6



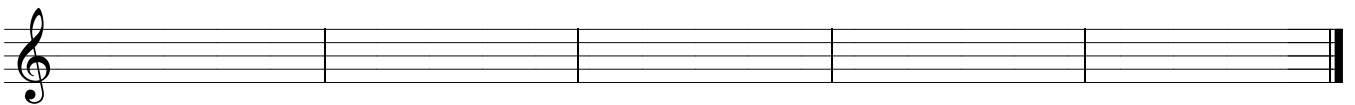
7



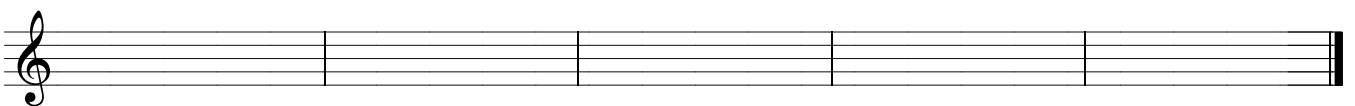
8



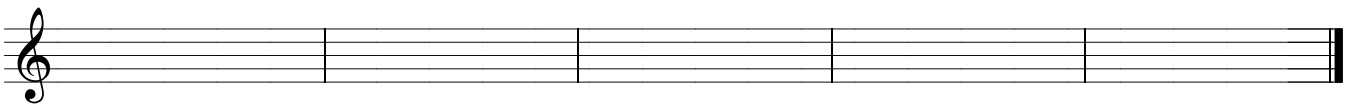
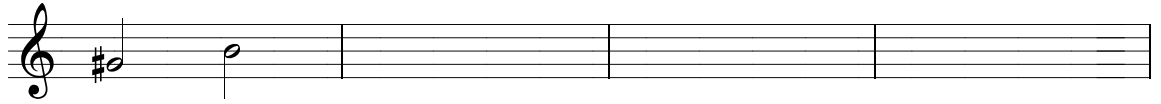
9



10



11



12

